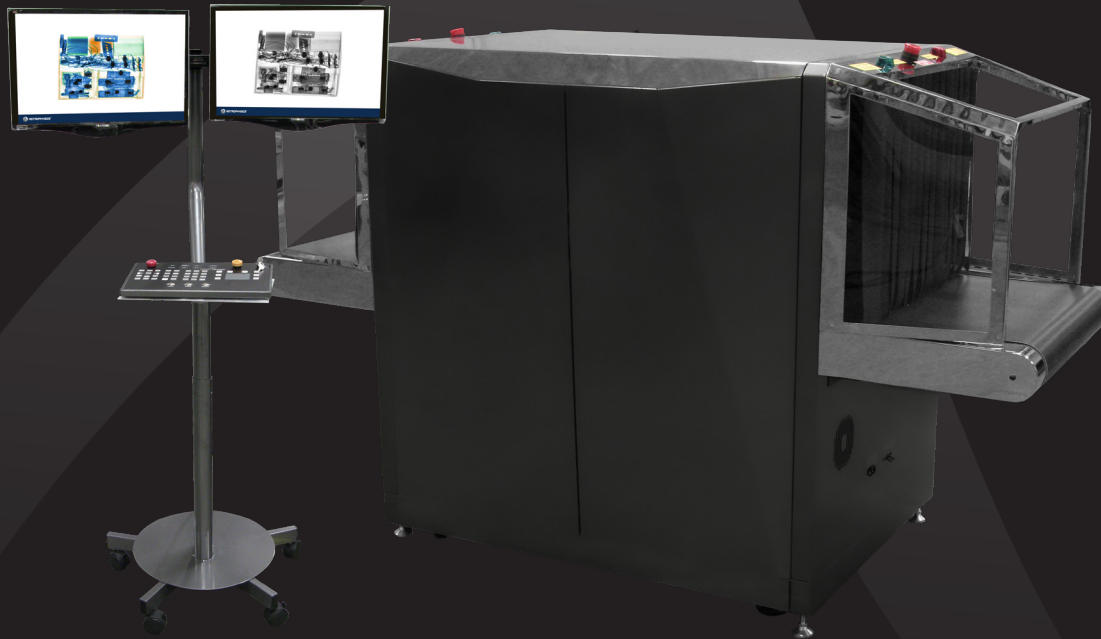




DESIGN OF THE FUTURE

The 6545VI™ is undoubtedly the highest performance system in its class. The 6545VI™ has an upgraded frame with stainless steel accents, tunnel extensions, and service friendly paneling, complete with a Mobile Monitor Stand for a sleek new aesthetic.

With advanced VI software, dual 21.5" monitors and a 180 kV generator, the 6545VI™ generates high definition images with unparalleled clarity and penetration.



PRODUCT HIGHLIGHTS

High Resolution Image with 24-Bit Color

Real-Time Diagnostics

Windows 10 Operating System with Intel® Core™ Processor

Enhanced Material Discrimination

Enhanced Imaging™

6545VI™

TOMORROW'S TECHNOLOGY FOR TODAY'S SECURITY™



GENERAL SPECIFICATIONS

Tunnel Size: (WxH)	65.1 cm x 45.4 cm 25.6" x 17.88"
Dimensions: ¹ (LxWxH)	218.8 cm x 95.3 cm x 130.7 cm 86.2" x 37.5" x 51.5"
Net Weight: ¹	520 kg (1145 lbs)
Shipping Weight: ¹	710 kg (1565 lbs)
Conveyor Speed:	23 cm/s (45 ft/min) Forward or Reverse
Conveyor Height:	73.4 cm (28.9") from Floor
Conveyor Capacity:	165 kg (364 lbs) Evenly Distributed Load

X-RAY GENERATOR & IMAGE PERFORMANCE

Voltage:	180kV, Operating at 165kV
Tube Current:	1.2 mA
Wire Resolution: ²	41 AWG Typical, 40 AWG Standard
Steel Penetration: ²	43 mm Typical, 41 mm Standard
Cooling:	Sealed Di-Electric Oil Bath with Forced Air
Duty Cycle:	100%, No Warm-Up Procedure Required
Beam Direction:	Diagonally Upward

COMPUTER & VIDEO

Platform:	Windows® 10 OS
Power Conditioner:	Automatic Voltage Regulator (AVR), 600VA
Display Type:	Dual 21.5" Flat Panel Color Monitors
Display Resolution:	1920 x 1080; 24 Bit/Pixel Color

ENVIRONMENTAL

Operating Temperature:	0°C to 40°C / 32°F to 104°F
Storage Temperature:	-20°C to 60°C / -4°F to 140°F
Humidity:	Up to 95% Non-Condensing

ELECTRICAL

System Power:	110VAC +/- 10% 50/60Hz, 15 Amp Max 220 VAC +/- 10% 50/60Hz, 10 Amp Max
---------------	---

HEALTH & SAFETY

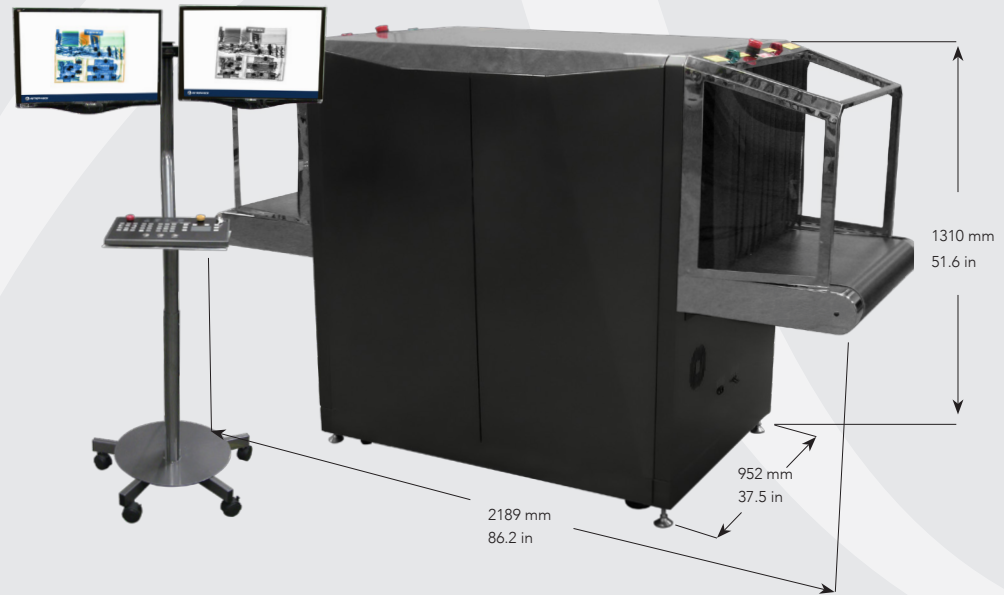
Compliant with USFDA Center for Devices and Radiation Health Standards for Cabinet X-Ray Systems (21-CFR 1020.40)
Typical radiation leakage is less than 0.1 mR/hr
(Leakage less than 0.5 mR/hr permitted by U.S. Federal Standards)

STANDARD FEATURES

3 & 6 Color Imaging	Baggage Counter
Black & White Imaging	Image Annotation
Enhanced Imaging™	JPEG Conversion
High Penetration Function	Print Image Capable
Organic/Inorganic Imaging	Multi-Tier Accessibility
Pseudo Color	Network Ready
Reverse Monochrome	Real-Time Self Diagnostics
Atomic Z-Number Measurement	9 Quadrant Zoom
Material Discrimination	Continuous Scanning
Geometric Image Distortion Correction	Continuous Zoom Up to 64x
Real-Time Image Manipulation	Vertical Zoom Panning
Auto Image Archiving	
Image Review	
Save Image (RGB)	

OPTIONAL FEATURES³

Artificial Intelligence (AI)	Footmat Operator Interlock
Barcode Scanning	Roller Bed
Density Alert	Internal/External UPS
Local Language	Radiation Meter
Safe Passage® Computer Based Training	Remote Workstation Configuration
Screener Assist Software	24" Flat Panel Monitor
Test Case	Custom Paint
Threat Image Projection (TIP) Software	Entry/Exit Roller Tables
External USB Ports	Environmental Kit
Conveyor Capacity Load Increase	
Variable Conveyor Speed	



ISO 9001 & ISO 14001: Certified

¹Weight and dimensions of the system may vary depending on customization.

²As tested on Astrophysics Inc. Test Piece.

³Optional Features may affect lead time, price, and weight of product. Please contact your Astrophysics Sales Representative for more information.

Due to continued product research and development, Astrophysics Inc. reserves the right to amend all technical specifications without prior notice. Contact sales@astrophysicsinc.com for the most updated brochures.



14 Odem ST, P.O.B. 7042 Petach Tikva 4917001, ISRAEL | Office: +972-3-924-3352
Fax: +972-3-9243385 | sales@hypertech.co.il | www.hypertech.co.il

DCO# 3728 P/N 5000-PB31-00 Rev.K

sales@astrophysicsinc.com | www.astrophysicsinc.com

Technical Data 6545VI™