

## SPECIFICATION:

FREQUENCY:	1575 ±10 MHz
POLARIZATION:	RIGHT HAND CIRCULAR
AXIAL RATIO:	3.0 dB TYP.
RADIATION COVERAGE:	4.0 dBic TYPICAL -3.0 dBic @ 10° ABOVE HORIZON
AMPLIFIER GAIN:	43 dB ±2dB
NOISE FIGURE:	3.0 dB TYPICAL(3.5db MAX)
VOLTAGE:	REGULATED 4.5-15Vdc TYPICAL
CURRENT CONSUMPTION:	40 mA MAX.
IMPEDANCE:	50 OHMS
VSWR:	≤2.0:1
CONNECTOR:	SMA FEMALE TYPICAL
WEIGHT:	.65 LBS
ALTITUDE:	TO 70,000' (21,000 METERS)
OPERATING TEMP:	-55°C TO +85°C
DESIGNED TO:	DO-160D ENV CAT: E1-ABB[S(CLMY)U(FF1)]XSFDZSZZAAZPH[A3][2A]
TSO	C-144

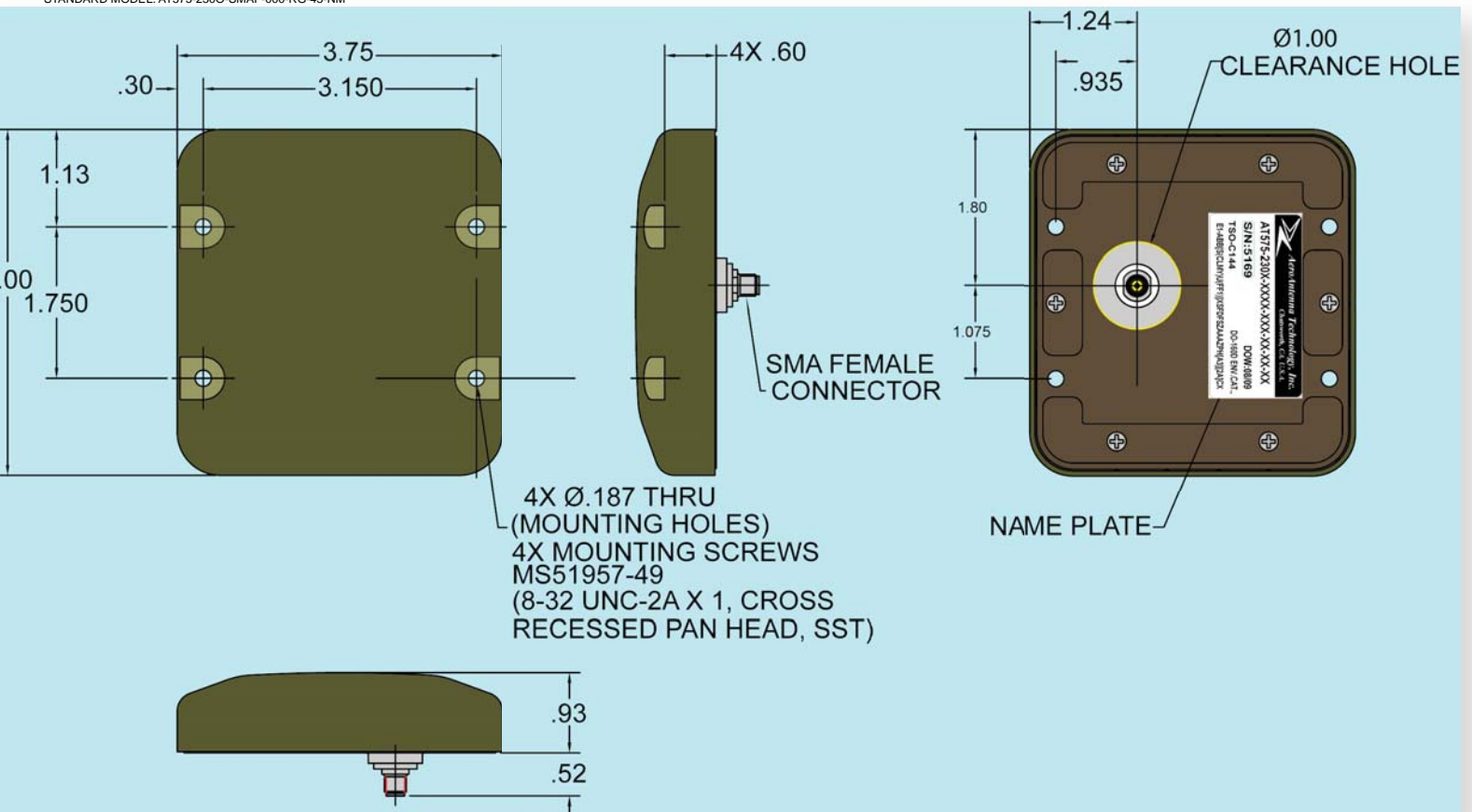


## PART NO. DESIGNATION:

AT575-230XXX-XXXX-XXX-XX-XX-XX

CUSTOMER ID (IF APPLICABLE)	MAGNET NM = NO MAGNET
COLOR W = WHITE B = BLACK O = OLIVE DRAB	GAIN (± 2 dB) 43 = 43 dB (40 mA) XX = OTHER
CONNECTOR SMAF = SMA FEMALE	VOLTAGE RG = 4.5-15 VDC XX = OTHER
CABLE LENGTH * 000 = IN INCHES	

\* = OPTION NOT AVAILABLE WITH THIS MODEL  
STANDARD MODEL: AT575-2300-SMAF-000-RG-43-NM



 **AeroAntenna Technology Inc.**

03-9243358 פקס ▪ 03-9243352 :טל ▪ 7042 פ"ת, ת.ד. 14, אודם 14

www.hypertech.co.il ▪ sales@hypertech.co.il

**היפר-טק**  
מ ע ר כות 